

Carol Duets



May, 2012

Inside this issue:

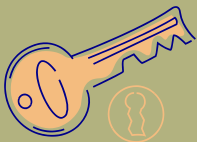
Unwelcome Guests—Is Your Home Safe? 1

Bougainvillea - A New Thorny Defense 1

Fremont - Crime is a City-Wide Issue 2

Where Thieves Gain Entry 2

Contact Info 2



Unwelcome Guests - Is Your Home Safe?



There has been a break-in and attempts in the community at Carol Duets. Is your home at risk? Read on to find out how you can protect your home from unwelcome guests.

It can happen at any time, whether you are home or not. Someone could be trying to get into your home. Do you feel safe? Are you confident that your home is secure? Without taking the proper security measures, your home could be an easy target for a burglar.

Homes without security systems are three times more likely to be broken into than those with security systems. With the average amount in losses being around

\$2,000 per burglary, taking the proper precautions will help deterring burglars drastically.

Listed below are a few home improvement tips that you can invest in to deter a burglar from attempting to burglarize your home.

- Have secure locks on windows and doors.
- Install and maintain an alarm system.
- Have a secured and bolted down safe.
- Invest in motion-sensored lighting.

The main goal of a burglar is to take your money and valuables and get out of your home as quick as possible. By taking measures to raise the time it would take, you might end up changing that burglars mind.

(Information courtesy of US Census Bureau, Homeseecurity.net, FBI.gov)

Get to know your neighbors:

- ❖ Get to know all your adjacent neighbors
- ❖ Agree to watch out for each other's home
- ❖ Offer to occasionally park your car in their driveway
- ❖ Return the favor and communicate often

**Additional Information
can be found at:**

www.fremontpolice.org

www.fremont.gov

TIMING

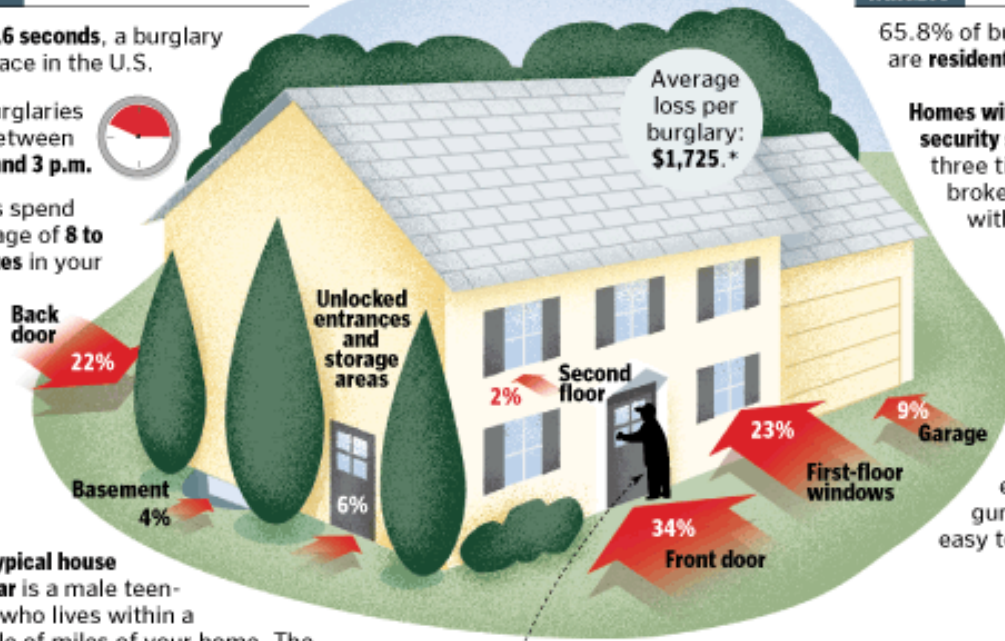
Every 14.6 seconds, a burglary takes place in the U.S.

Most burglaries occur between 10 a.m. and 3 p.m.

Burglars spend an average of 8 to 12 minutes in your home.



WHERE THIEVES GAIN ENTRY



Average loss per burglary: \$1,725.*

TARGETS

65.8% of burglaries are residential.



Homes without security systems are about three times as likely to be broken into than homes with security systems.

First stop: Usually the master bedroom because most people keep their valuables there.

Favorite items: Cash, jewelry, electronic equipment, silver, guns and other items easy to sell.

The typical house burglar is a male teenager who lives within a couple of miles of your home. The chance of being victimized by a professional thief is low.

Bougainvillea— A New Thorny Defense



We are happy to announce a new defense against property invasion, the bougainvillea vine. They are thorny, woody vines growing anywhere from 1 to 12 meters tall with beautiful flowers ranging in color from light pink to dark purple. These vines will be planted this month in front of the back retaining wall. This should assist in preventing trespassers from jumping over the wall.

(Information courtesy of Wikipedia.com)

Prime Management

819 Second Street
Fairfield, CA 94533
Phone: 707-398-9599
Fax: 707-398-9599

Email:
celeste@prime-management.com
sarah@prime-management.com